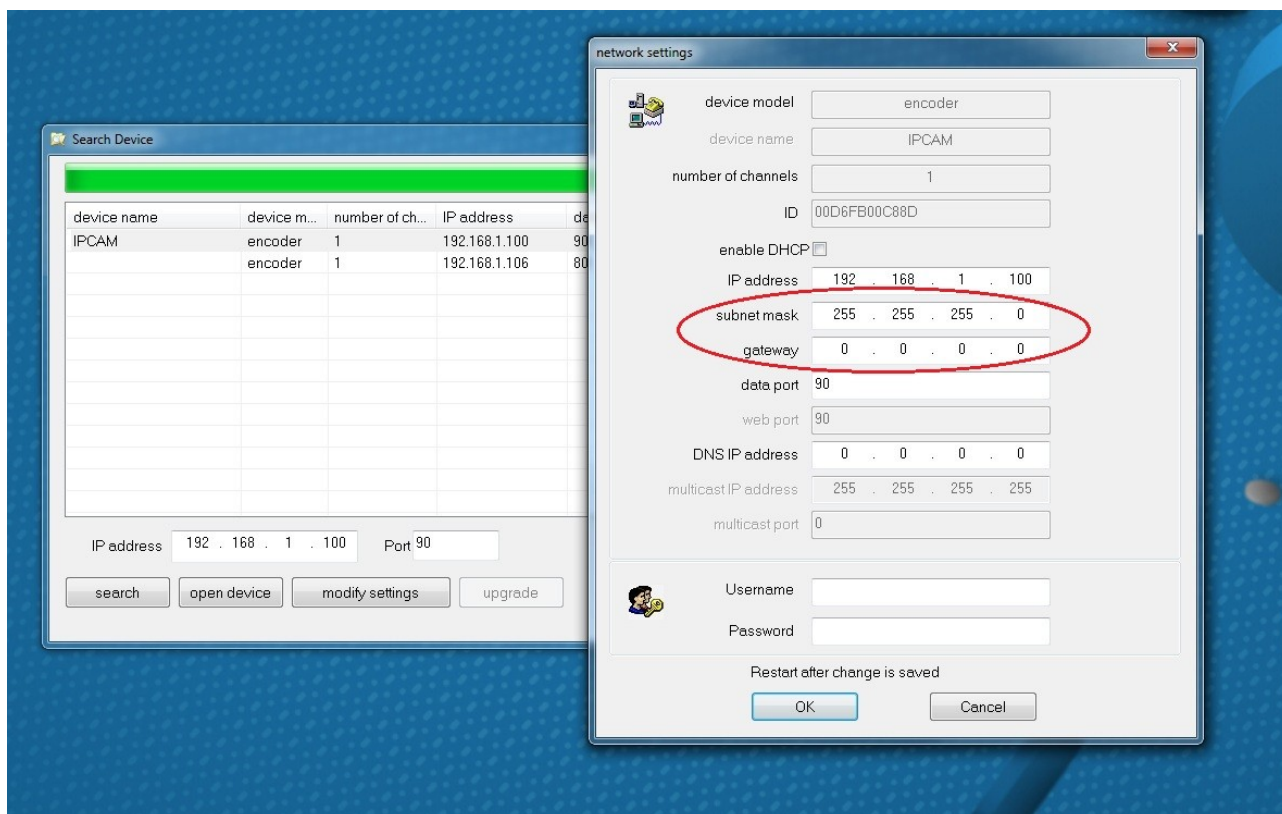
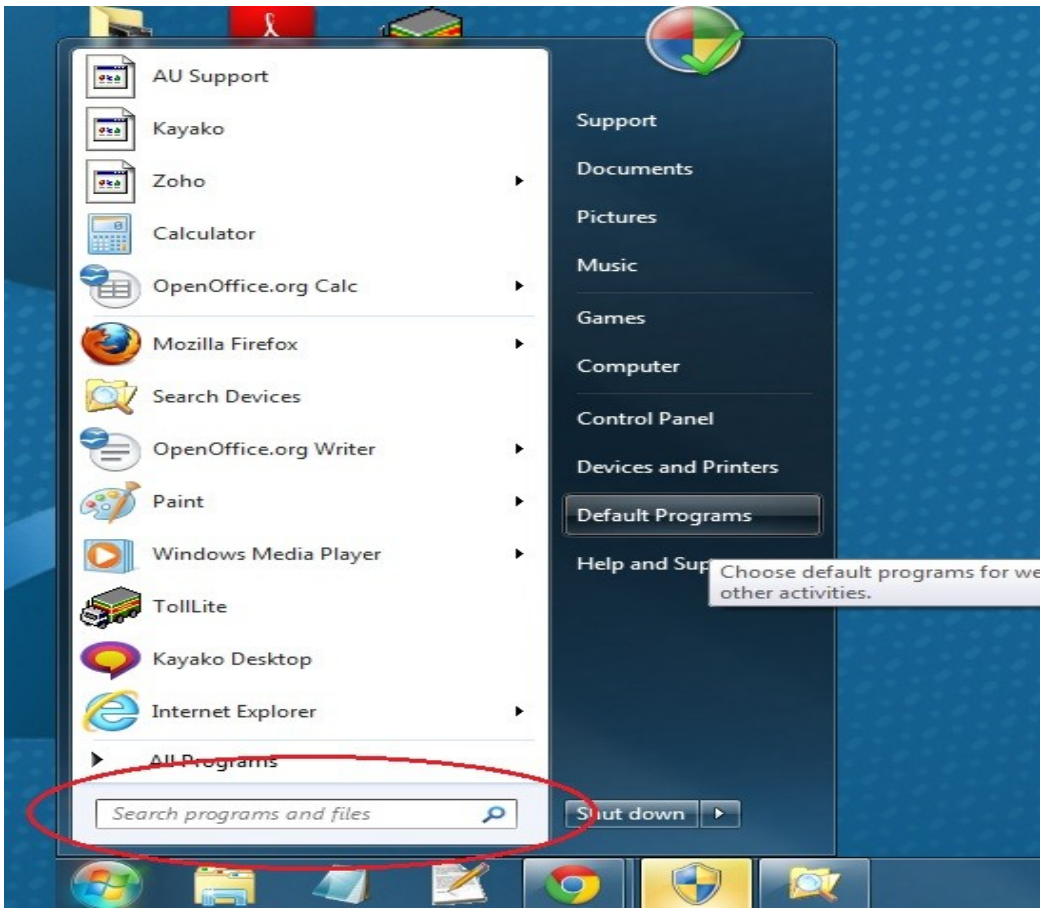


IP Camera Initial Setup Guide:

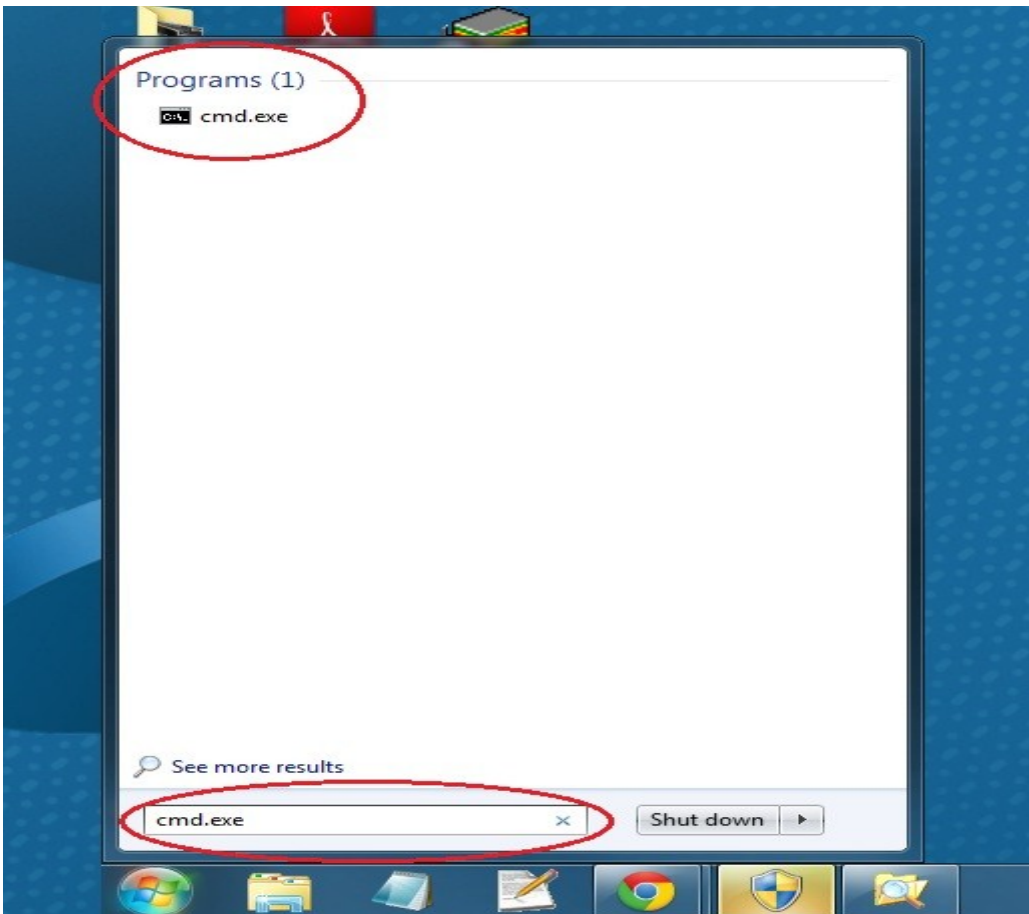
- 1> Connect the camera to power and network using supplied Ethernet cable
- 2> Install the camera software using "IP Finder.exe" from the supplied CD or download from <http://www.sendspace.com/pro/dl/n642l9>
- 3> Once the software has been installed, open the "Search Devices" program on your computer
- 4> Select the "Search" option. Your camera will appear with the device name of "IPCAM"
- 5> Select the camera and choose to "Modify Settings". You will need to set the Subnet Mask, Gateway and IP address.
- 6> Start with the Subnet Mask and Gateway. Match these to the Subnet Mask and Default Gateway of your network. You may obtain this information by doing the following:
 - Go to Start Menu > Run / Search Programs and Files > cmd.exe > type in ipconfig command > press enterPlease refer to images step6a, b, c, d, e



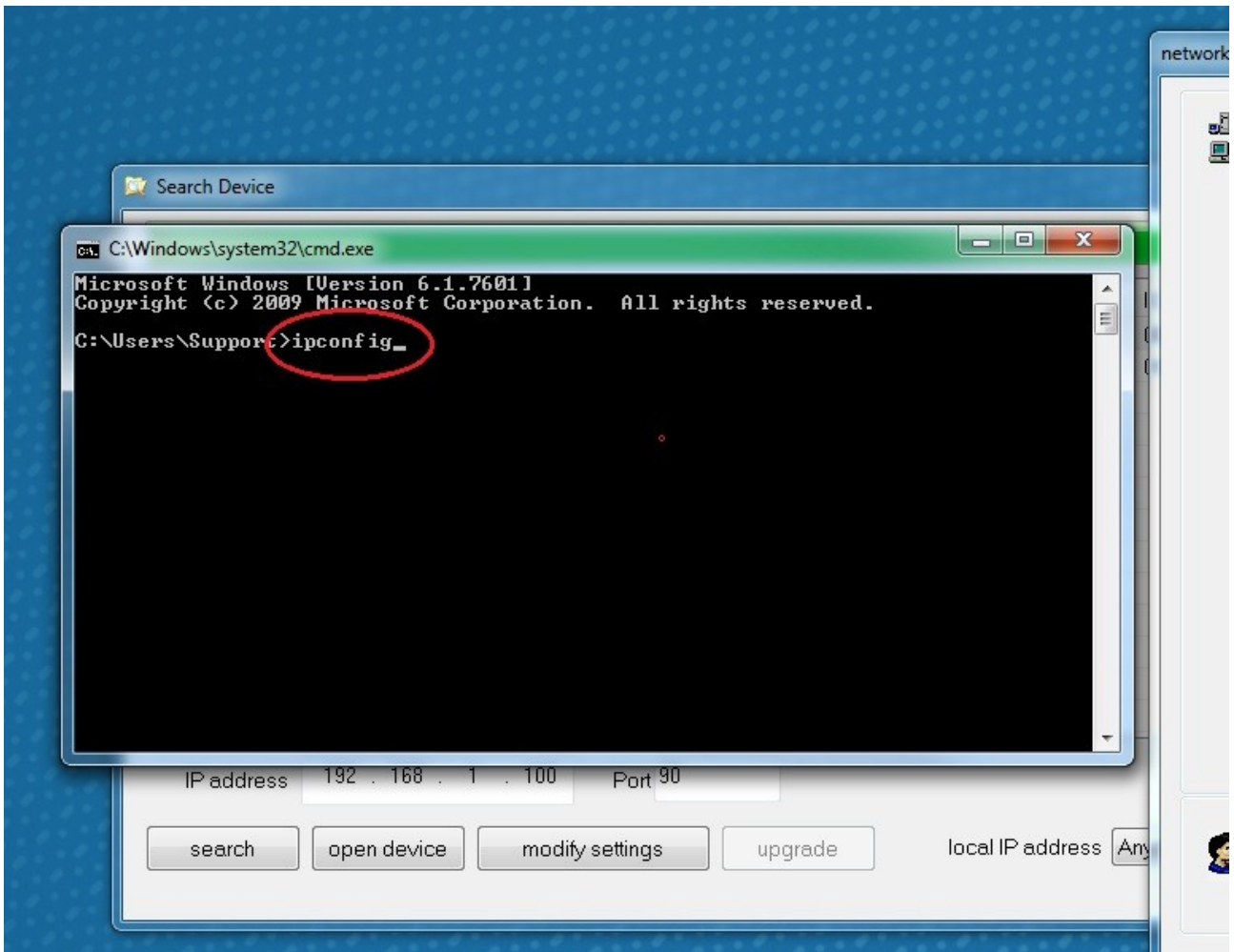
Step6a



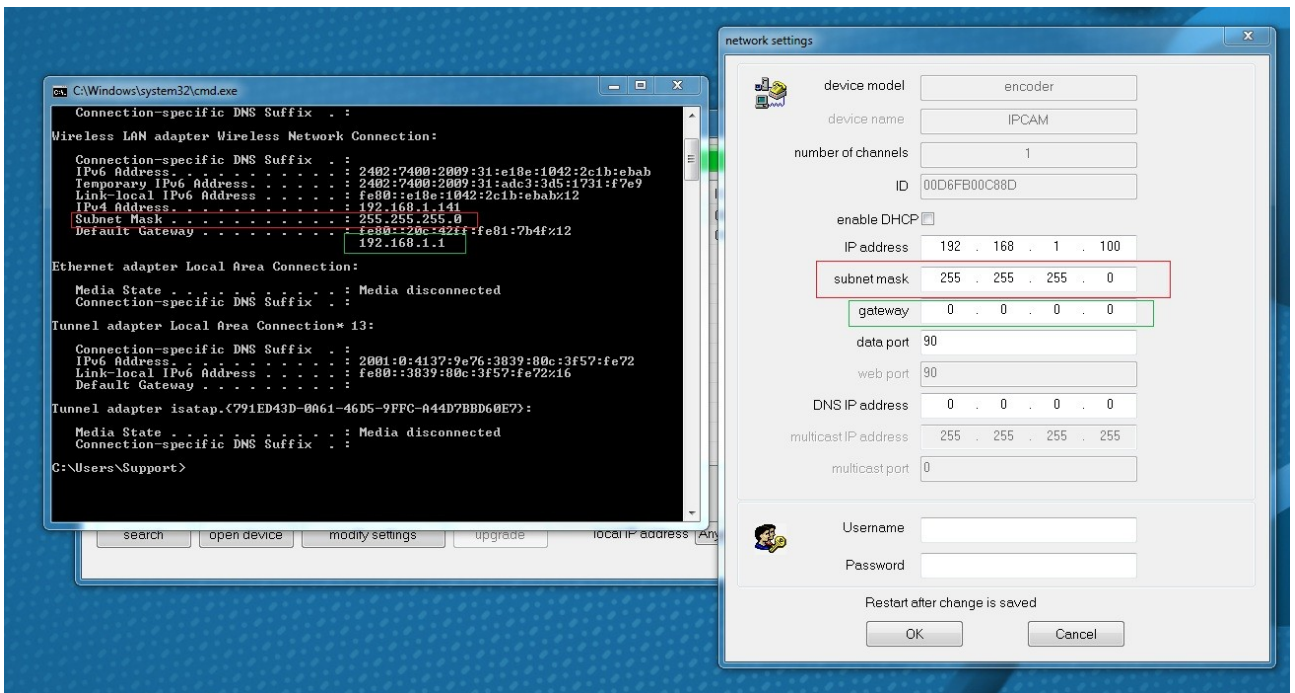
Step6b



Step6c



Step6d



Step6e

7> Now set the IP address of the camera so that the first 3 numbers match the gateway and the last number is unique.
Please refer to image step7 for example.

network settings

device model: encoder

device name: IPCAM

number of channels: 1

ID: 00D6FB00C88D

enable DHCP

IP address: 192 . 168 . 1 . 100

subnet mask: 255 . 255 . 255 . 0

gateway: 192 . 168 . 1 . 1

data port: 90

web port: 90

DNS IP address: 0 . 0 . 0 . 0

multicast IP address: 255 . 255 . 255 . 255

multicast port: 0

Username:

Password:

Restart after change is saved

OK Cancel

Step7

8> Save the changes made by entering Username and Password of the camera (Default username: admin, Default password: <blank>) and clicking on "OK"

9> Wait 2 - 3 minutes for the camera to restart. You will see the green light on the front flash and the camera will rotate when restarting. The camera will become stationary once this has been successful.

10> After this, click on "Search" option. You will see the camera again.

11> To access the camera you can either select it and click on "open device" or enter the following in the address bar of your browser:
<IP ADDRESS>:<DATA PORT>
For example, if camera uses the settings shown in step 7, this would be 192.168.1.100:90

Connecting the camera to your wireless network:

1> Access the camera and select the camera settings option.

Please refer to WLAN1 image

2> Now select the "Wireless Lan Settings" option. From here you can scan for available wireless networks. You may need to scan multiple times if your network is not picked up straight away.

3> Once you have found your network, select it by double-clicking. You can then enter your password and click on "Submit" to connect

4> Wait for 2 - 3 minutes for the camera to connect to via Wi-fi.