



# **4 WHEEL SMART TYRE PRESSURE MONITORING SYSTEM**

CTTPMSTLAPA



# SAFETY & WARNINGS

- Read all instructions before installing the sensors and retain for future reference.
- Use caution when working around excessive air pressure in car tyres.
- Deflate the tyre before attempting installation of internal tyre sensors.
- Keep the lithium button batteries away from children
- Dispose of the lithium batteries correctly in accordance with your local authorities.

## WARNING – KEEP BATTERIES OUT OF REACH OF CHILDREN



- Swallowing may lead to serious injury or death in as little as 2 hours, due to chemical burns and potential perforation of the oesophagus.
- If you suspect your child has swallowed or inserted a button battery immediately call the 24-hour Poisons Information Centre on **13 11 26 (Australia)** or **0800 764 766 (New Zealand)** for fast, expert advice.
- Examine devices and make sure the battery compartment is correctly secured, e.g. that the screw or other mechanical fastener is tightened. Do not use if compartment is not secure.
- Dispose of used button batteries immediately and safely. Flat batteries can still be dangerous.
- Tell others about the risk associated with button batteries and how to keep their children safe.

# COMPONENTS



Sensor  
(x4)



Anti-tamper ring  
(x4)



Spanner



Battery  
replacement tool

# APP INSTALLATION

Download and install the "Smart TPMS" app from App Store (Apple) or Google Play Store (Android).

## App System Requirements

- Android 4.3 and above
- iOS 7.0 and above
- Bluetooth 4.0 and above



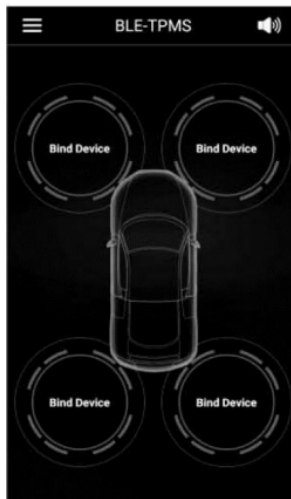
## Pairing Sensors

### Note:

Pair all sensors with a smart phone before installation onto the tyre

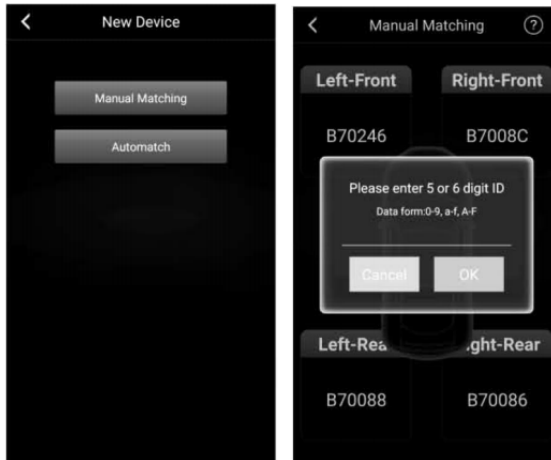
## Step 1.

- Open the "Smart TPMS" app on your mobile device. You will be prompted to turn on the Bluetooth if it is not already active.
- On the app main screen, select one of the four "Bind Device" options.



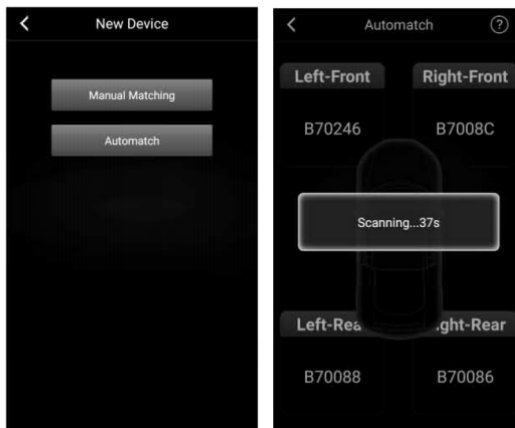
## Step 2a. Manual Pairing:

- Select “Manual Matching”.
- Select one of the tyre positions and enter the sensor ID number for the corresponding sensor (refer to “Sensor ID codes” section of this user guide).
- Repeat for the remaining sensors.



## Step 2b. Automatic Pairing:

- Select “Automatch”.
- Once the app begins scanning, slowly insert the battery on the sensor halfway to put the sensor into pairing mode.
- Once the app has successfully paired with the sensor, the battery can be fully inserted into the sensor.
- Repeat for the remaining sensors.



### Step 3.

- Once all sensors have been paired, return to the main screen where tyre pressure data is displayed.
- A voice message will play, "Tire pressure and temperature is normal, enjoy your driving"



### Application Settings

To access the app settings, press the button in the top left corner on the main screen.

<b>Auto Start:</b>	The app will automatically start when the phone is powered on
<b>Voice Alarm:</b>	The mobile phone will play a voice alarm if the safety values of the sensor are exceeded.
<b>Pressure Unit:</b>	Bar, Psi, kPa
<b>Pressure-Range:</b>	Set the minimum and maximum tyre pressures which will trigger the Voice Alarm. Refer to your car user manual or tyre specifications to identifying your preferred settings. Default settings are set to 2.0 and 3.0 Bar respectively.
<b>Temp-Unit:</b>	Cycle between Celsius °C and Fahrenheit °F.
<b>Temp-Range:</b>	Set the maximum temperature that you do not want the tyre to exceed. Refer to your car user manual or tyre specifications to identify your preferred settings. Default value is 65°C.
<b>Restore Defaults Settings:</b>	Revert to original settings

## Sensor ID codes

Use these ID codes to manually pair the sensors with the app.

F.L	_____	F.R	_____
R.L	_____	R.R	_____

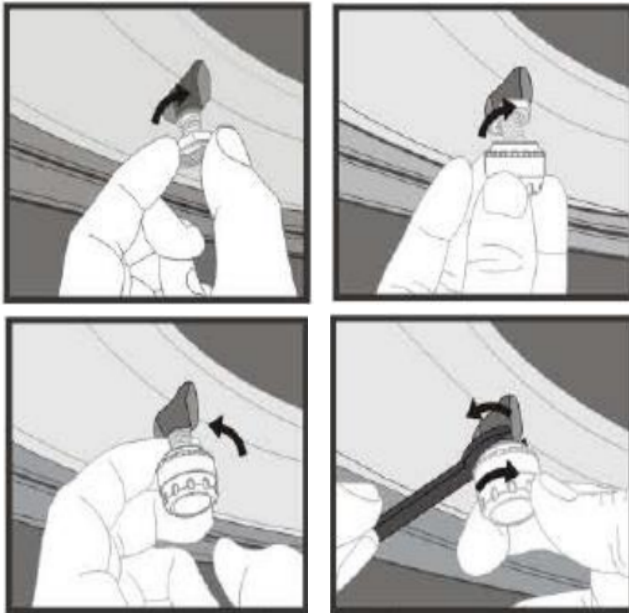


# INSTALLATION

**Note:**

Ensure all sensors are paired with the app before installing the sensors onto your wheels.

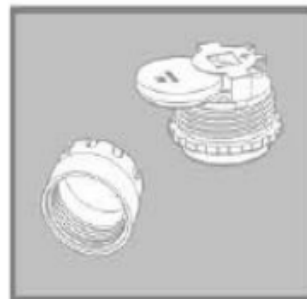
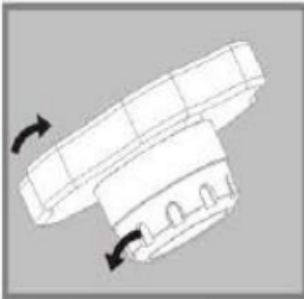
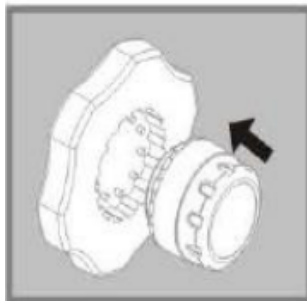
1. Screw the anti-tamper nut onto the tyre valve.
2. Screw the sensor onto the tyre valve.
3. Screw the anti-tamper ring counter clockwise until it makes contact with the sensor.
4. Tighten the anti-tamper ring using the supplied spanner.
5. Repeat steps 1-4 for the remaining sensors.



- Keep the wrench safe and accessible as it will be needed to remove the sensors.

## Replacing the Battery

1. Remove the sensor using the supplied spanner.
2. Insert the sensor into the battery replacement tool.
3. Screw the anti-tamper ring counter-clockwise until it makes contact with the sensor.
4. Open the battery compartment by rotating the battery replacement tool clockwise.
5. Remove and discard the old battery.
6. Replace the battery with a CR1632 battery.
7. Refer to pairing steps to reconnect the sensor to the app.



# TROUBLESHOOTING

## **Data is not displayed after pairing sensors.**

TPMS sensor data may only be available after the vehicle exceeds 20km/h while driving or after the vehicle has been driven for 11 minutes.

If tyre pressure is at or below 0.3 bar the sensor will enter a power saving mode.

## **Sensors have been paired and the vehicle is running but no values are displayed.**

Restart the application and confirm that Bluetooth is turned on. Data will be received in 2 minutes under normal circumstances.

## **App interface indicates abnormal tyre conditions, but no voice prompt is heard.**

Confirm that the voice message function is activated in settings. Ensure the phone is not in silent mode or volume is set to minimum.

## **Excessive tyre pressure difference found in first installation.**

After initial installation the air pressure of the tyre may have not yet fully passed through to the sensor. The sensor will read the correct pressure value as the air is distributed after 5-10 minutes of driving.

### **Need more information?**

We hope that this user guide has given you the assistance needed for a simple set-up. For the most up-to-date guide for your product, as well as any additional assistance you may require, head online to **[help.kogan.com](https://help.kogan.com)**

**kogan.com**