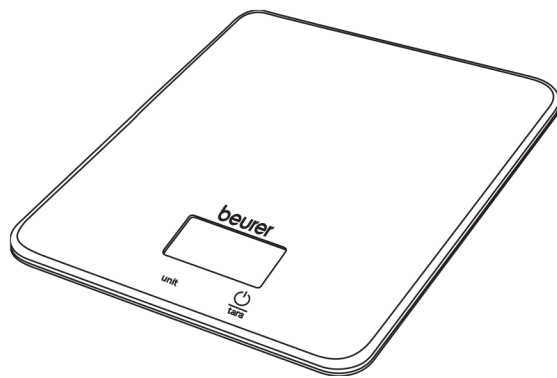


beurer

KS 19

berry, fresh, lemon, sequence, black,
toffee, breakfast, ice-cream

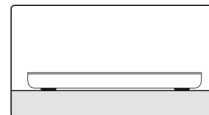
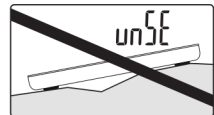
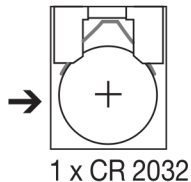
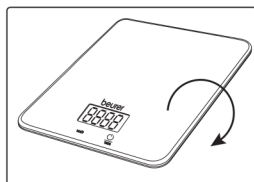


GB Kitchen scale

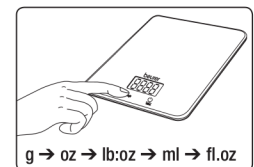
Beurer GmbH
Söflinger Str. 218 • 89077 Ulm, Germany
Tel.: +49 (0)731 / 39 89-144 • Fax: +49 (0)731 / 39 89-255
www.beurer.com • Mail: kd@beurer.de



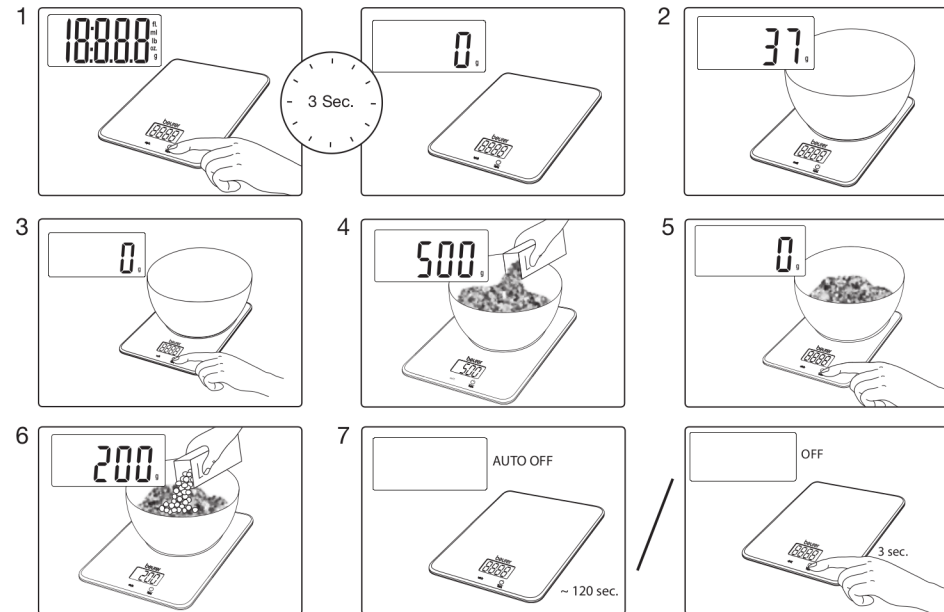
GB Commissioning



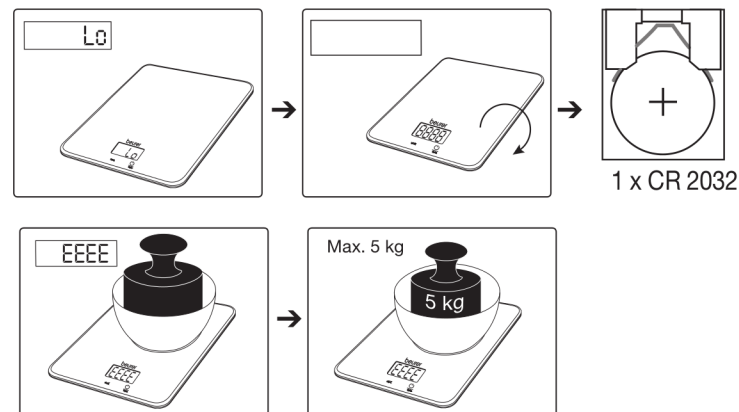
GB Adjusting the unit



GB Weighing and additional weighing



GB Error messages



GB Important instructions

- Max. capacity 5 kg (11 lb), graduation 1 g (0.1 oz).
- Protect your scale from impact with hard objects, moisture, dust, chemicals, toiletries, liquid cosmetics, great temperature fluctuation and closeness to sources of heat (open fires, radiators).
- Cleaning: You can clean the scale with a damp cloth and a little washing up liquid, if required. Never immerse the scale in water or rinse it under running water.
- Strong electromagnetic fields (e.g. cell phones) may impair the accuracy of the scale.
- The scale is not intended to be used for commercial purposes.
- Repairs may only be performed by Beurer customer service or by accredited retailers.

Spent batteries and rechargeable batteries do not constitute normal household waste! They are considered to be toxic waste and, as such, should be disposed of in special containers, toxic waste collection points or brought to electrical goods dealers.

Note: Batteries containing pollutant substances are marked as follows: Pb = Battery contains lead, Cd = Battery contains cadmium, Hg = Battery contains mercury.

Please dispose of the device in accordance with EC Directive – WEEE (Waste Electrical and Electronic Equipment). If you have any queries, please contact the appropriate local authorities.



Notes on handling batteries

- If your skin or eyes come into contact with battery fluid, flush out the affected areas with water and seek medical assistance.
- Choking hazard! Small children may swallow and choke on batteries. Store the batteries out of the reach of small children.
- Observe the plus (+) and minus (-) polarity signs.
- If a battery has leaked, put on protective gloves and clean the battery compartment with a dry cloth.
- Protect the batteries from excessive heat.
- Risk of explosion! Never throw batteries into a fire.
- Do not charge or short-circuit batteries.
- If the device is not to be used for a long period, take the batteries out of the battery compartment.
- Use identical or equivalent battery types only.
- Always replace all batteries at the same time.
- Do not use rechargeable batteries.
- Do not disassemble, split or crush the batteries.