



2000W Black Glass Portable Electric Panel Heater with WiFi KAHTP20BLKWA Quick Start Guide

Table of Contents

Safety & Warnings.....	1
Overview.....	2
Installation.....	2
Operation.....	3
Cleaning & Care.....	5

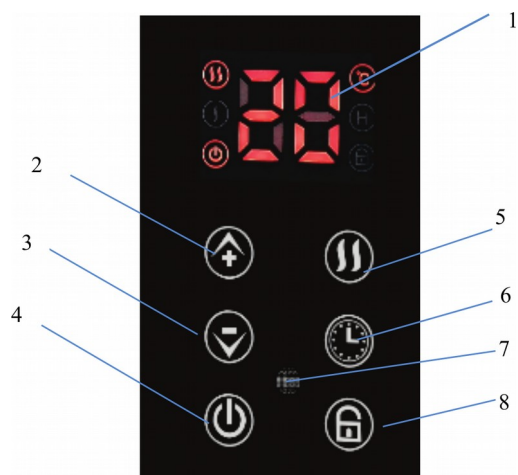
Safety & Warnings

Handle with care and inspect regularly to ensure product is in good working order.
If this product, power supply cord or plug shows any signs of damage: stop use, unplug the product and contact Kogan.com support.

- Read all instructions before using the appliance and retain for reference.
- This appliance is not intended for use by persons (including children) with reduced physical, sensory or mental capabilities, or lack of experience and knowledge, unless they have been given supervision or instruction concerning use of the appliance by a person responsible for their safety.
- This appliance is designed for indoor use: follow directions and use only as described.
- Do not allow the power cord to be exposed to water, heat, direct sunlight or overhang where it can be pulled or otherwise be damaged or pose a hazard.
- This appliance contains no user-serviceable parts. If it experiences any failure or damage, contact Kogan Support.
- Ensure the appliance is switched off before connecting to the mains power supply.
- The heater must not be located immediately below its power socket.
- Do not operate in areas where fuel, paint or any other flammable liquids are used or stored.
- In order to avoid overheating, do not cover the heater or block the air intakes or exhaust vents in any manner. Do not place the heater on carpet and don't place the cable under carpets.
- Do not touch the hot surfaces directly.
- Do not insert or allow foreign objects to enter into any ventilation or exhaust openings, as this may cause electric shock, fire or damage to the appliance.
- Always ensure that your hands are dry before operating or adjusting any switches on the product, or touching the plug and socket-outlet.
- Do not leave the heater unattended when it's in use.
- The most common cause of overheating is deposits of dust or fluff in the appliance. Ensure these deposits are removed regularly by disconnecting the appliance from the power supply, then vacuum cleaning the air vents and grilles.

Overview

Control Panel Functions

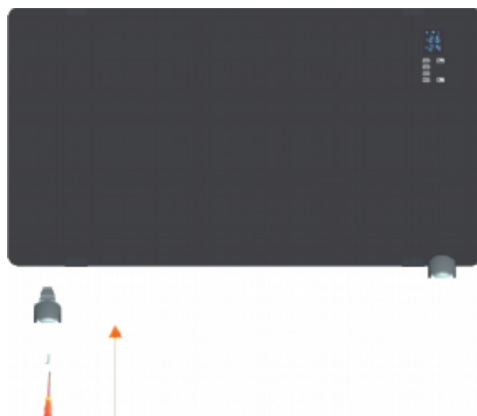


1. Display
2. Temperature "+" button
3. Temperature "-" button
4. Power button
5. Mode button
6. Timer button
7. Receiver
8. Child lock button

Installation

Portable Installation

Attach the feet on the heater's housing, and fix them with the supplied 8x ST12x4mm screws.



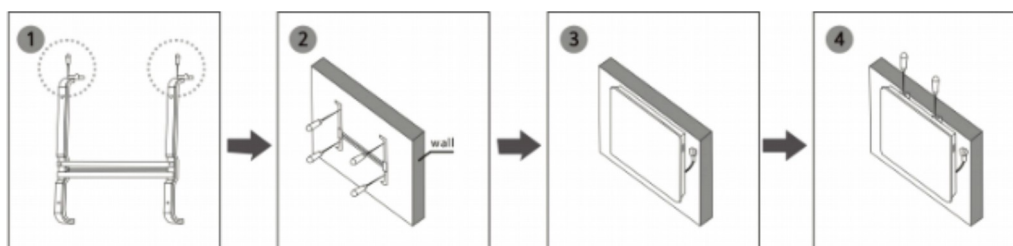
Wall Mounting

Install the bracket with screws as per **Image 1** below.

Drill holes at each sides on the wall and insert the plastic expanded plugs. Attach the bracket to the wall with screws as per **Image 2**.


Place the heater in a suitable position, ensuring that the holes align with the bracket (**Image 3**).

Tighten the screws on the top of bracket to secure it as per **Image 4**.



Operation

Power Function

Press “” to set functions. The upper part of the display will show the room temperature. The heater will be working at low power heating conditions.


Mode

Press “” to switch between low or high temperature power.


Temperature selection

Press “+” or “-” to select the desired temperature from a range of 15-35°C. The temperature indicator will remain lit for a short time.

Timer

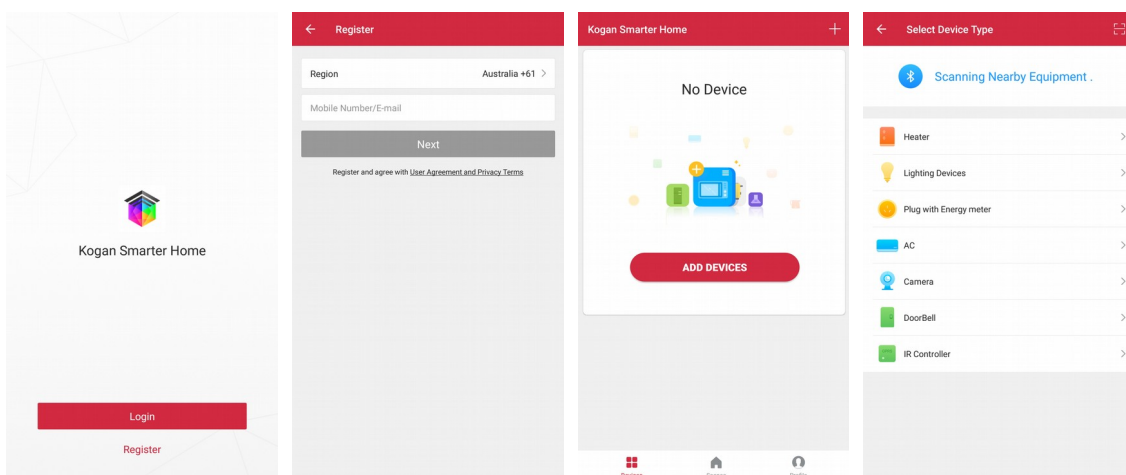
Press the timer button “” to select the desired range between 1 hour to 24 hours. The display will show the remaining time.


Child Lock

Press the child lock button for 3 seconds and “” will be displayed on the screen. Until you press the child lock button for 3 seconds again, the only command which will work is power.

Wi-Fi Function & SmarterHome Integration

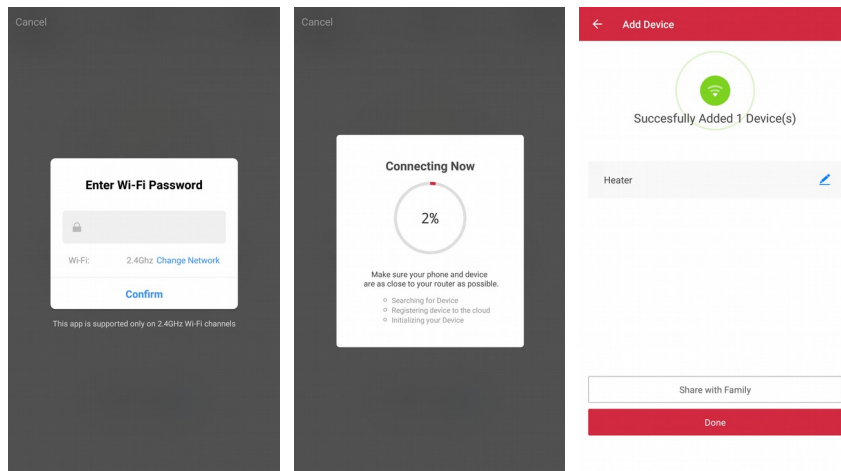
1. Download the “Kogan Smarter Home” app from the Play Store or App Store.
2. Select your country code, phone number and tap “Get” to get a message containing verification code.
3. Enter the verification code in the message and tap “Login” to log into the app.
4. Open the app and tap “ADD DEVICES” or select the + button in the top right corner.



5. Your heater will enter pairing mode automatically when turned on. If it is not, then you can power it off and on again or press and hold the mode button (“”) for 5 seconds or longer to reset it.


- Select Wi-Fi network (NOTE: it must be a 2.4Ghz network), enter password and tap “Confirm”.

When it has been added, you can press the “Edit” pencil icon to change its name. You can also change its name in the control panel under “Devices”.



- After the device is connected, tap “Devices” at the bottom. The device name will appear in the list. Tap it to enter the control panel.

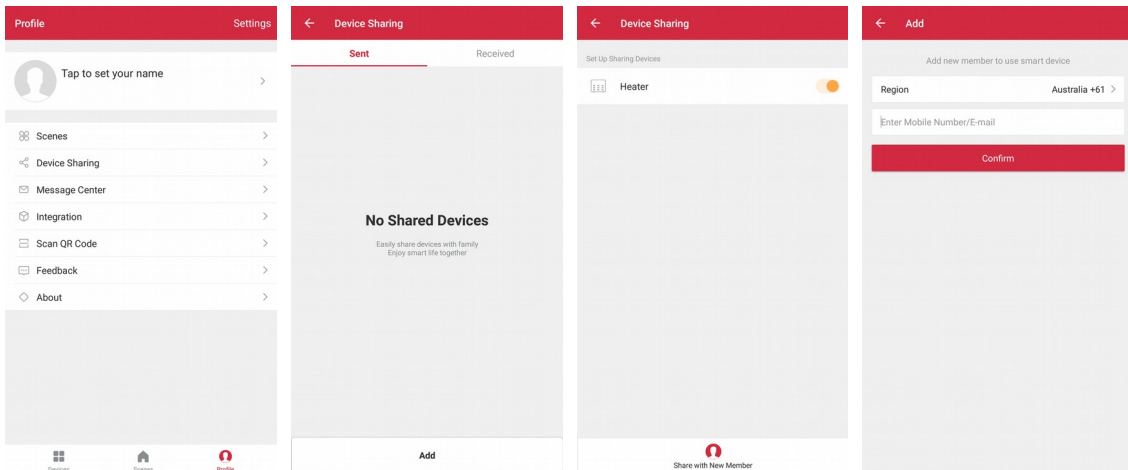
NOTE: When the device is offline, there will be an “offline” indicator in the devices list. If the device is shared by others, there will be a double loop indicator.

- Press “

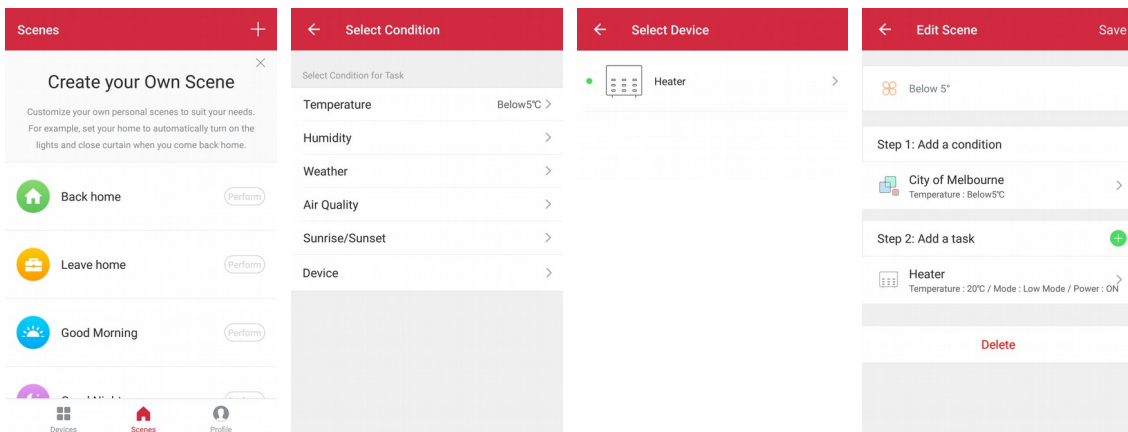
By selecting the menu in the top right, you will see additional options such as renaming, seeing device info, feedback, checking for updates as well as **creating a group** and **sharing**.

- Create Group: Select multiple of the same device and a “Group” will appear in the Devices list. The controls for this group are identical (see above). Any control made to the group will take effect on all devices in that group.

9. Sharing: Share device with other users using a connected phone number. The users can control the device with their own accounts.
10. Manage personal information in “My profile”.
 1. Personal information, including account name and phone number
 2. Information about shared devices
 3. Message centre
 4. Feedback
 5. F.A.Q.
 6. Connected phone number
 7. About



11. Scenes: Create scenarios to carry out automated tasks, e.g. turn the heater on when the temperature drops below 5°C. Choose one of the four pre-set tasks or create your own with the + button.



Cleaning & Care

- Before cleaning, always remove the plug from the electrical outlet.
- Clean the air inlet and outlet grilles frequently.
- Never use abrasive powders or solvents.

User manual is subject to change without notice. For the latest version of your user manual, please visit <https://www.kogan.com/usermanuals/>