

kogan

KATWSERPNAA

True Wireless Earphones for Apple Devices

User Manual

Safety & Warnings

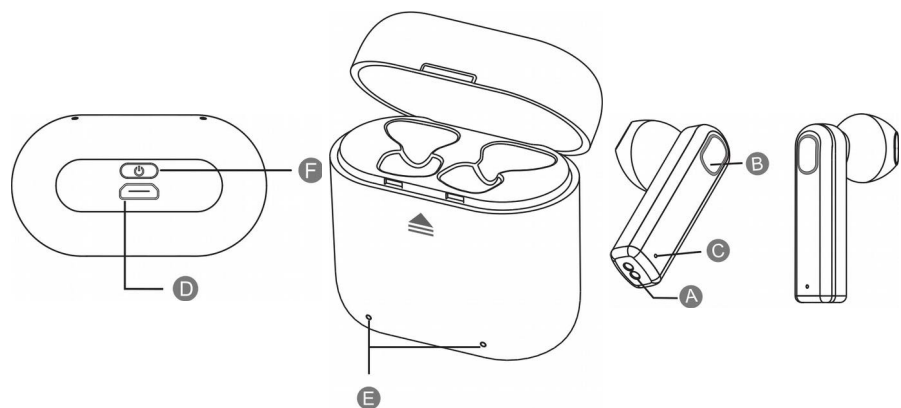
- Read all instructions before using the device and retain for reference.
- Use this device in an operating environment of 0-45°C to avoid product malfunction or damage.
- Do not allow the device to be exposed to water or high-humidity environment.
- Do not allow the product to be damaged or dropped.
- Power off before cleaning.
- Sustained exposure to high volume can cause hearing loss. Take frequent breaks and listen at a moderate volume.
- This product contains small parts which can pose a choking hazard. Keep away from children.
- This appliance contains no user-serviceable parts. If it suffers any failure or damage, cease usage and contact Kogan Support after consulting the Troubleshooting section of this manual.

Specifications

Charging time	Music / call time	Operating range	Battery	Charging input	Earbud weight
1.5 hours	3 hours / 5 hours	10m	Polymer Li-Ion	5V 1A	6g + 6g

Product Overview

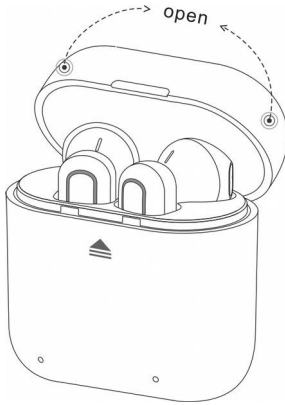
- A. Contact charging point
- B. Function button
- C. Microphone
- D. Charging USB port
- E. Charging status LED
- F. Power on/off



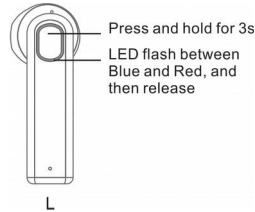
Setup

NOTE: Throughout this manual, “L” is used on the “master” earbud as an example. The master earbud is determined when you connect to the device for the first time. The “slave” earbud is the remaining earbud.

Open charging case and remove earbuds



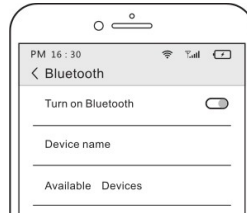
Prepare earbuds for pairing



Initial use:, press & hold either earbud 3s until LED flashes blue & red and release.

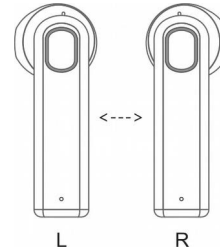
(Voice will read “power on” and “pairing”.)

Open Bluetooth on mobile device



Locate and pair with KATWSERPNA.

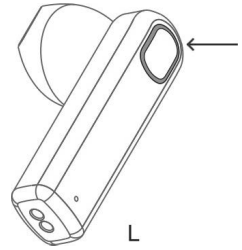
Press and hold other earbud for 1s



LED will flash red. The earbuds will pair to each other automatically.

LED will flash blue once paired.

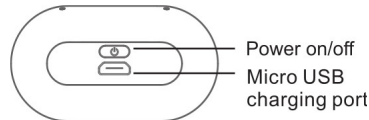
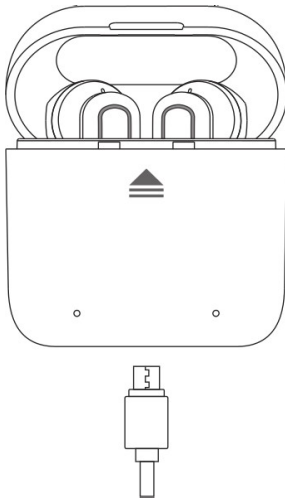
Press and hold function button of either earbud



Both earbuds will turn off together.

(Voice will read “power off.”)

Charging



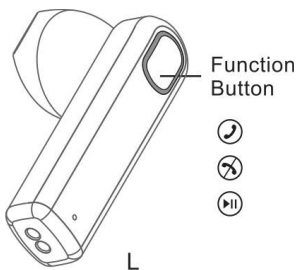
When the battery is low, the LED will flash red and the voice will read a low battery notification.

Plug the earbud into the charging case, and the LED indicator will turn a solid red to indicate charging connection.

While charging, the LED will flash red again.

When fully charged the LED will illuminate blue and turn off after 5 seconds.

More functions



To answer an incoming call, press the Function button once to answer.

Press twice to reject.

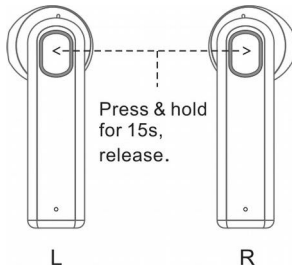
During calling mode, only the master earbud has sound.

During music mode, press the function button once to toggle play/pause.

Troubleshooting

- If you cannot locate the device, double-check that your mobile device's Bluetooth is visible and in scanning mode.
- If only one earbud has sound during music mode, restart the earbuds or restore default settings.

Restore default settings



Ensure earbuds are fully charged, place nearby and hold the function buttons of both simultaneously for 15 seconds.

When the LED indicator flashes blue, the reset is complete.