

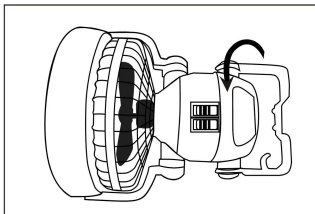
KOMODO

2-in-1 Tent LED Camping Fan KDDLT21FANA Quick Start Guide

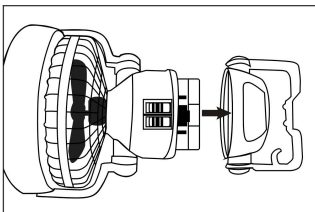
Features

- Easy to operate
- Dual-speed fan
- Long-lasting 18 LEDs
- Textured grip handle with built-in hanging hook

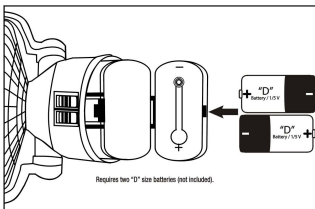
Changing Battery



Turn base of lantern counter-clockwise.



Pull base away from body.



Press on the latch of the battery compartment cover to release and replace with two "D" size batteries (not included), ensuring correct polarities.

Close the battery compartment cover securely and replace lantern base by turning clockwise.

Caution

- Do not mix old and new batteries.
- Do not mix alkaline, standard or rechargeable batteries.
- Always remove batteries when the unit is not being used for a long time.