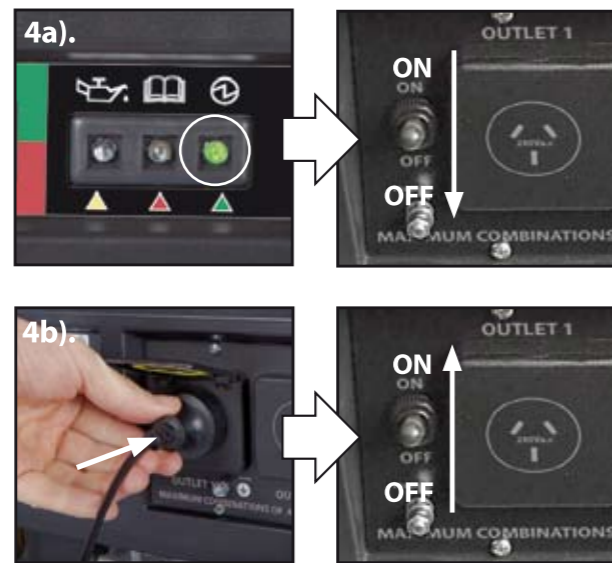


4. Connecting apparatus to the Generator

- a). Start the generator and allow the generator to run for a few minutes to warm up, then check the following:
- green LED power supply indicator (9) is glowing green.
 - the total rating of the appliance/s to be connected and ensure the rating of the appliance/s does not exceed the rating of the generator*.
 - the appliance/s to be connected are turned 'OFF'.
 - the master 240Va.c switch (13) is turned OFF.
- b). Insert the 3 pin plug of the appliance/s into the 240V AC outlet socket/s (12), then turn on the master 240Va.c switch (13) so 240Va.c. power is available to the 3 AC output sockets (12). The connected appliance/s can now be switched on. Refer pages 24/25 in manual.
- IMPORTANT: The generator will only power a maximum combination of appliances / devices upto 3200W.**
- * Refer to the manual on pages 14 & 24 for approximate rated and starting watts of various appliances. ALWAYS check the rating label of your appliances – these figures are a guide only.



4.

www.909.com 1800 909 909 info@909.com

909

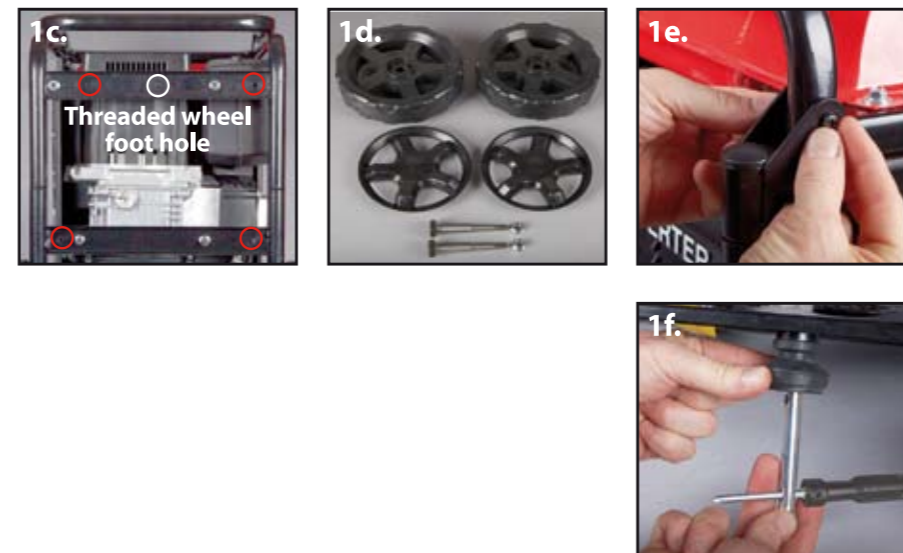
3500W Inverter Generator
with Pure Sine Wave
52299

QUICK START GUIDE

NOTE: Ensure you have read the full instruction manual in conjunction with this starting guide, before operating the generator.

1. Assembly – Handle, Wheels & Feet

- a). This generator comes shipped unassembled allowing you to choose to use the generator as:
- **Compact Stand Alone unit:** with feet assembled, but no wheels or handle assembled.
 - **Portable Wheeled unit:** with the handle, wheels and wheel foot assembled, but no feet assembled.
- b). Unpack the generator from the box and depending on how you wish to assemble, refer to the following pages in the manual:
- c). Compact Stand alone assembly – 4 x feet – Page 15
 - d). Portable Wheeled assembly – Wheel assembly – Page 16/17
 - e). Portable Wheeled assembly – Handle Assembly – Page 17/18
 - f). Portable Wheeled assembly – wheel foot Assembly – Page 17



1.

www.909.com 1800 909 909 info@909.com

2. Preparing the Generator

WARNING: Ensure the engine is switched off while undertaking these tasks and ensure the generator is on a flat and level surface.

2a). Checking the Engine Fuel

NOTE: This generator uses unleaded fuel. Do not use ethanol base fuels. Do not mix any oil with the unleaded fuel. The Tank capacity is 10.5L.

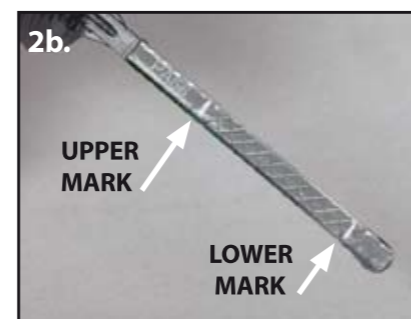
Remove the fuel tank cap (2) and fuel tank inlet filter (27) ensuring it is clean and free of debris.

Check the level of fuel is sufficient, then re-insert the fuel tank inlet filter (27). To add fuel, pour the unleaded fuel from an approved fuel container into the fuel tank (1). As fuel expands, DO NOT FILL to the lip of the tank. Maximum fill is to the top of the fuel tank inlet filter (27) rim. Replace the fuel tank cap (2) and ensure tightened firmly. Refer page 19/20 in manual.

2b). Checking the Engine Oil

The engine of this generator is NOT filled with oil when unpacked. Prior to starting the engine ensure the oil tank is filled with 600ml SAE 10W-30 4 stroke oil.

Remove the oil filler cap (15) and wipe all oil residue off the oil dipstick (15). Re insert the oil filler cap (15) and thread the cap fully in position. Remove the oil filler cap (15) again and view the oil level on the oil dipstick (15). For the initial fill on first use, fill with 600ml of 4 stroke oil. Refer to pages 20/21 for detailed instructions.



3. Starting and Stopping the Engine

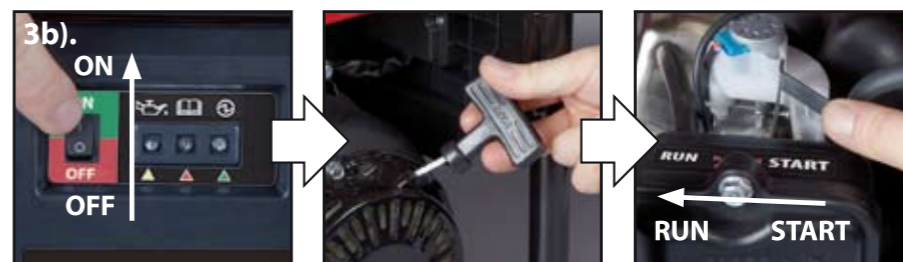
- a). Before starting, TURN OFF the master 240Va.c switch (13) to ensure that no electrical apparatus is electrically connected to the generator. Turn the fuel tap / lever (26) clockwise to 'on' position. Push the choke lever (19) forwards to full choke "START" position.



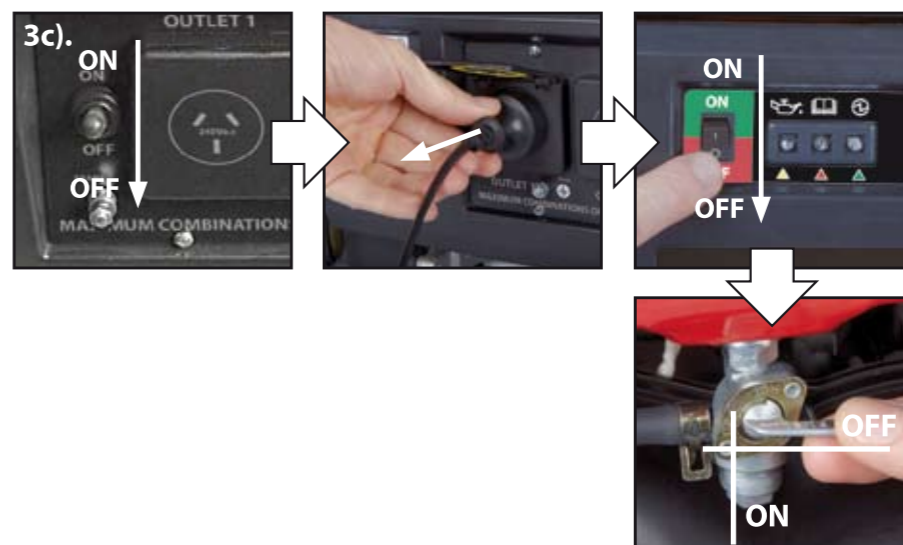
2.

www.909.com 1800 909 909 info@909.com

- b). Press the petrol motor On/Off switch (4) to the 'On' position as indicated by an 'I'. Slowly pull the recoil starter (18) until you feel it engage and then pull briskly. Once engine is operating, move the choke lever (19) backwards slowly to the "RUN" position.



- c). Before stopping, ensure no electrical apparatus is electrically connected to the generator. TURN OFF the master 240Va.c switch (13) to turn off power to the AC sockets (12), then remove any plugs in any of the AC sockets (12). Allow the petrol motor to slow down and idle for approx 30 seconds, then press the On/Off switch (4) to the 'Off' position as indicated by an 'O'. Turn the fuel tap / lever (26) anti clockwise to the 'off' position. Refer pages 22/23 in manual.



3.

www.909.com 1800 909 909 info@909.com