



# Pawever Pets Wireless Pet Clippers PPWLPTCLPRA Quick Start Guide

## Table of Contents

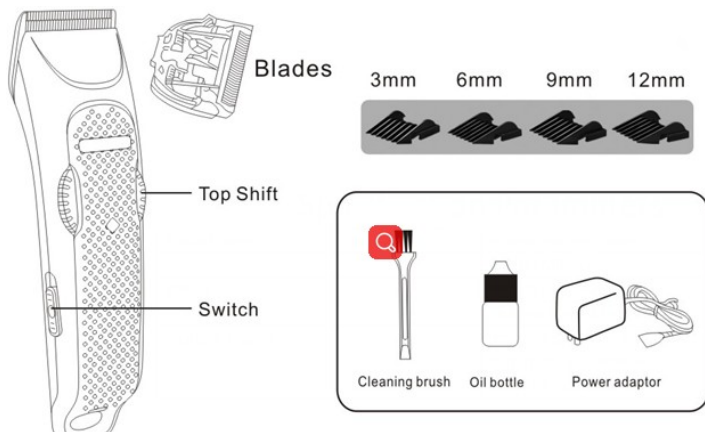
|                        |   |
|------------------------|---|
| Safety & Warnings..... | 1 |
| Overview.....          | 1 |
| Operation.....         | 2 |
| Cleaning & Care.....   | 3 |

## Safety & Warnings

- Read all instructions before using the appliance and retain for reference.
- This appliance is not intended for use by persons (including children) with reduced physical, sensory or mental capabilities, or lack of experience and knowledge, unless they have been given supervision or instruction concerning use of the appliance by a person responsible for their safety.
- Do not use outside of indoor household use as described in this manual.
- Do not handle with wet hands, as this may pose a risk of electric shock.
- Do not allow the product or its power cord to be exposed to water or wet environments (including bathrooms), heat, direct sunlight or overhang where it can be pulled or otherwise be damaged or pose a hazard.
- This appliance contains no user-serviceable parts. If it suffers any failure or damage, cease usage and contact Kogan Support after consulting the Troubleshooting section of this manual.

## Overview

### Included Parts



### Specifications

Battery: DC3.7V, 1400mAh  
Charging time: Approx. 3 hours  
Charging adaptor: 100-240V, 50/60Hz  
Charging output: DC 5V, 1000mA, 5W

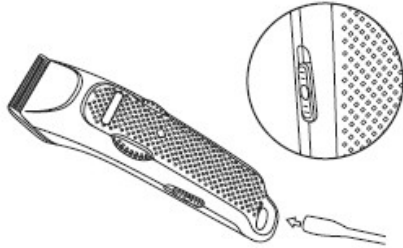
## Attention

Please handle this product with care and inspect it regularly to ensure it is in good working order.

If the product, power supply cord or plug shows any signs of damage: stop use, unplug and contact [Kogan.com](http://Kogan.com) support.

# Operation

## Charging

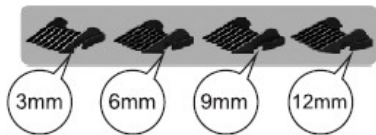


1. Connect the power adaptor to the appliance and it will begin charging.

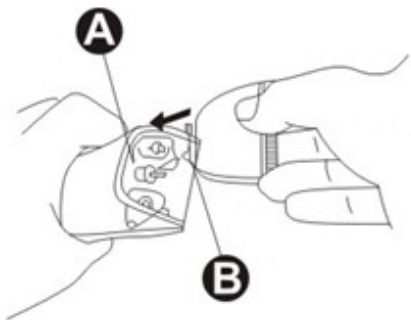
Ensure the appliance is turned off.

2. Charging will take approximately four hours. Once fully charged, the power indicator light will turn green.

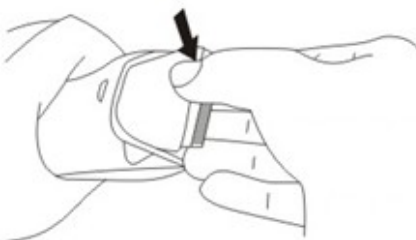
## Attaching a Blade



Select appropriate blade for cutting length.



Insert the blade to position A, aligned to position B.

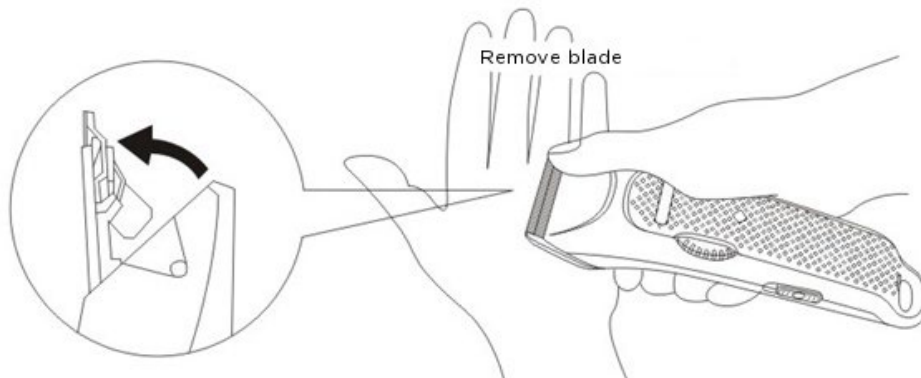


Press downward until it clicks into place.

# Cleaning & Care

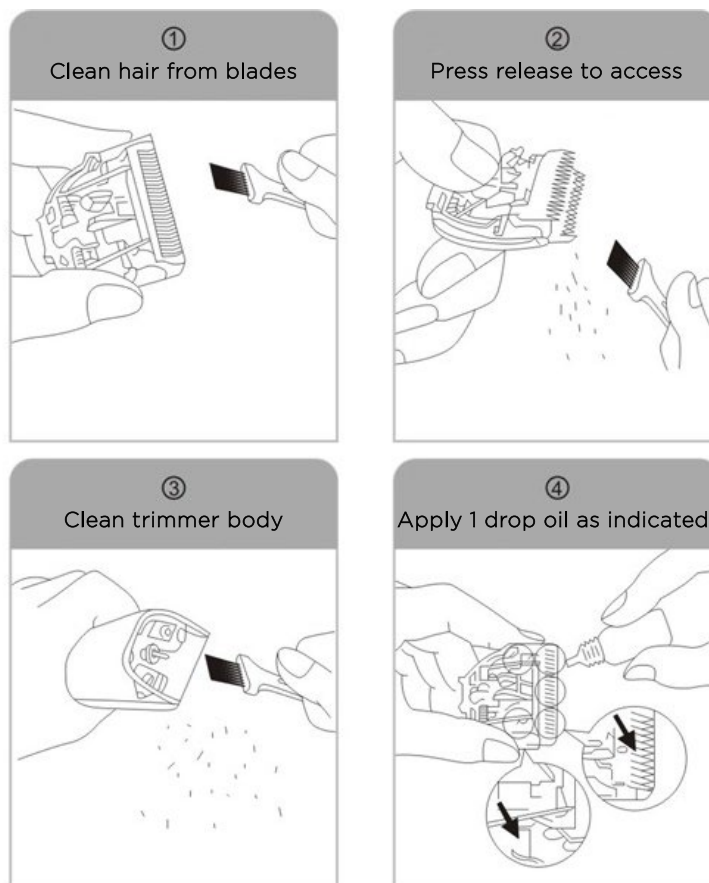
## After Use

Turn off the power, then remove the blade as below. Support with your free hand to keep the blade stable.



Reinsert the blade as described in “Attaching a Blade” under Operation.

## Cleaning



Note: Dispose of batteries in a thoughtful and environmentally-friendly manner.

User manual is subject to change without notice. For the latest version of your user manual, please visit <https://www.kogan.com/usermanuals/>