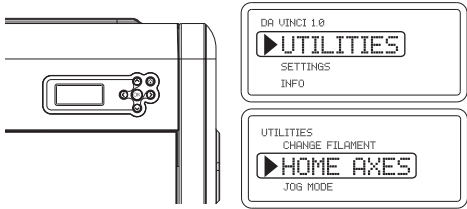


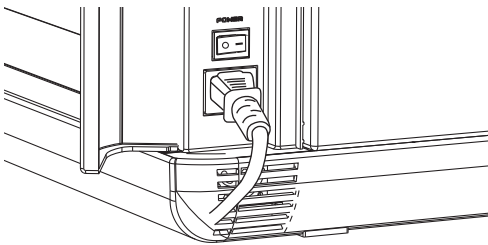
Heated Bed adjustment guide

If printing quality needs further improvement, please refer these steps to Heated bed adjustment.

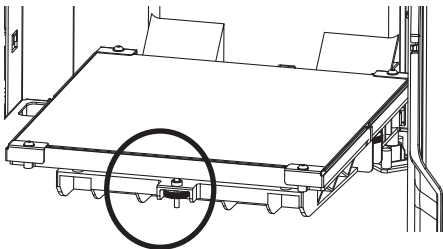
1. In the display panel, select the function 「UTILITY > HOME AXES」, the Heated Bed will then automatically position itself.



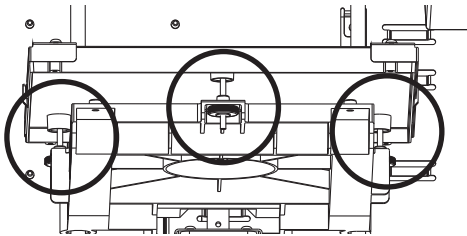
2. Power off the printer.



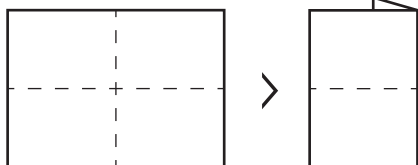
3. Note the position of the adjustment screws. These can be used to manually control the height of the Heated Bed.



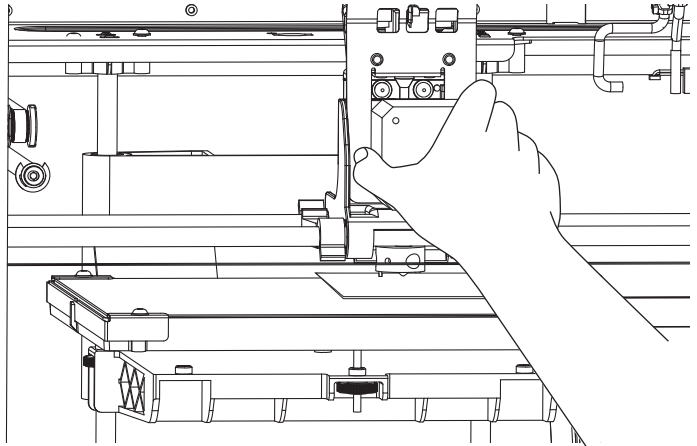
<adjustment screws position>



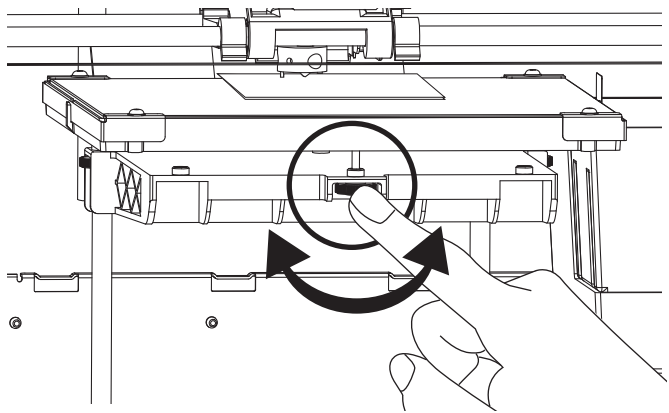
4. Fold the instruction guide as show in the image.



5. Insert the folded paper between the extruder and the Heated Bed this will measure approximately 0.2mm.



6. Use the adjustment screws to increase or decrease the height as needed.



7. Once the required adjustments are made, carefully remove the folded instruction guide.

