



## Win 8 Installation Troubleshooting Guide

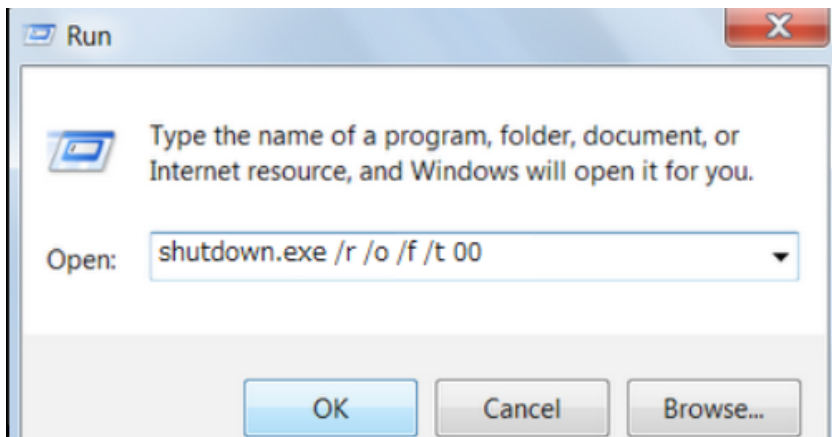
### Trademark claim

All trademarks and operating screens are the properties of their respective owners.

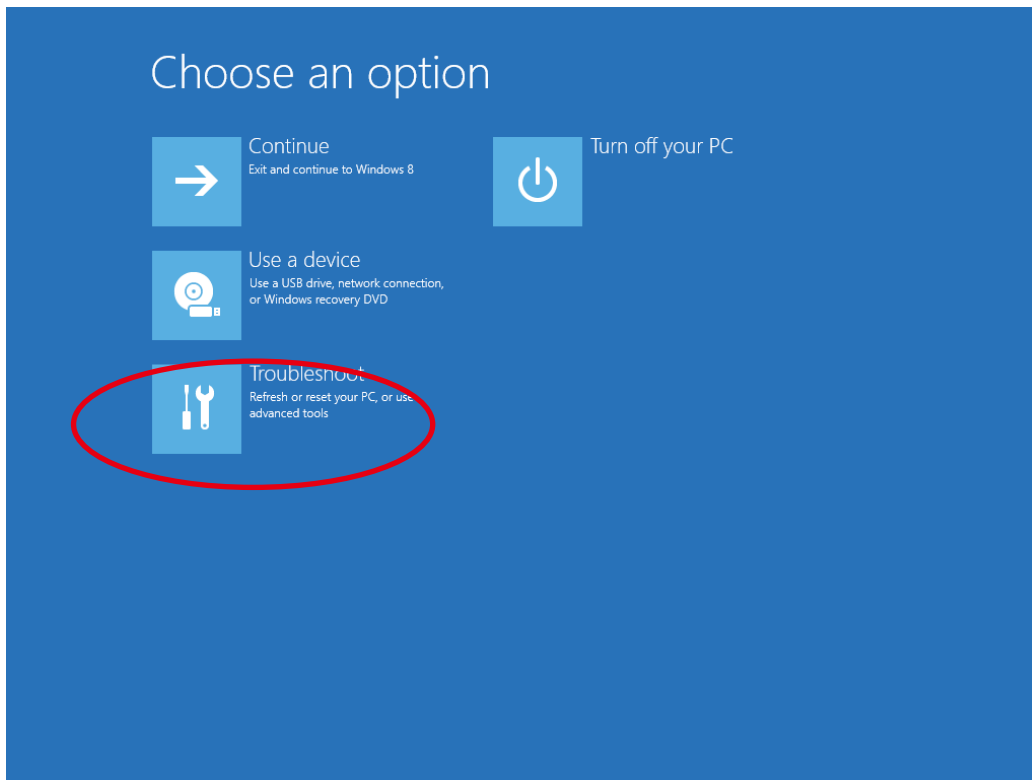
Q : For Win 8 OS, the procedure of the digital signature examination sometimes causes an error in setting up the XYZware. How to fix this problem?

A : A Please follow the method below to close the digital signature and set up the XYZware. This operation will not modify any system core data, but it's recommended that you backup important files before modification to avoid file loss.

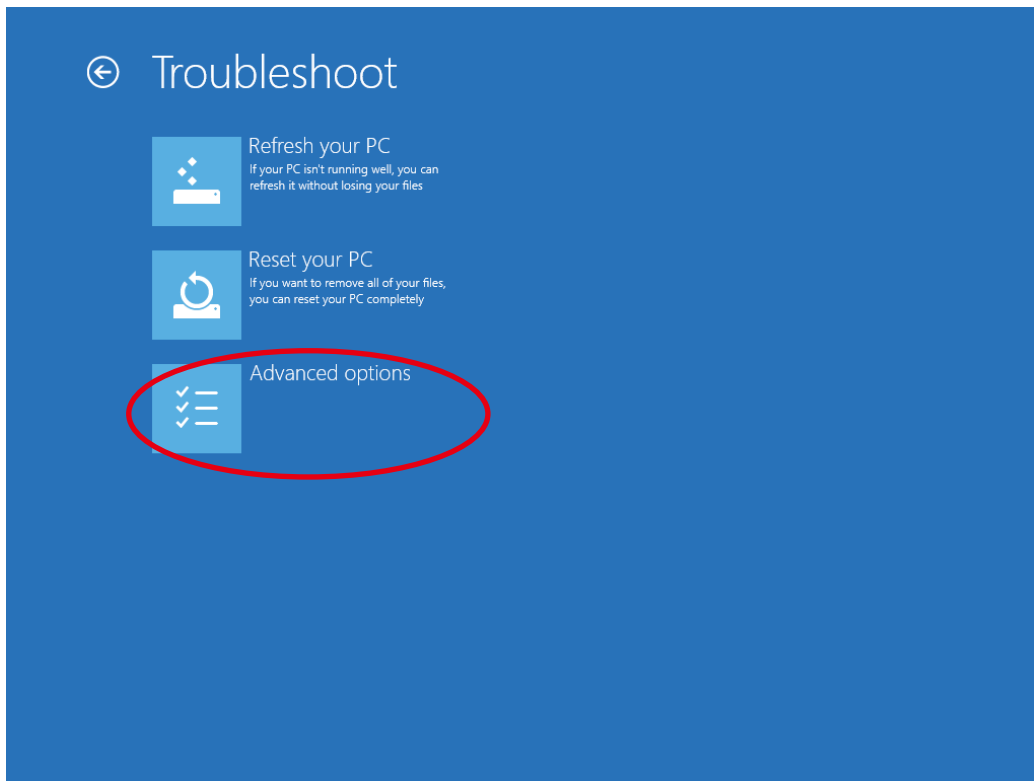
Step 1: Use "Windows+ R" to open the "Execution" window and enter shutdown.exe /r /o /f /t 00. Press "OK" and wait for restart.



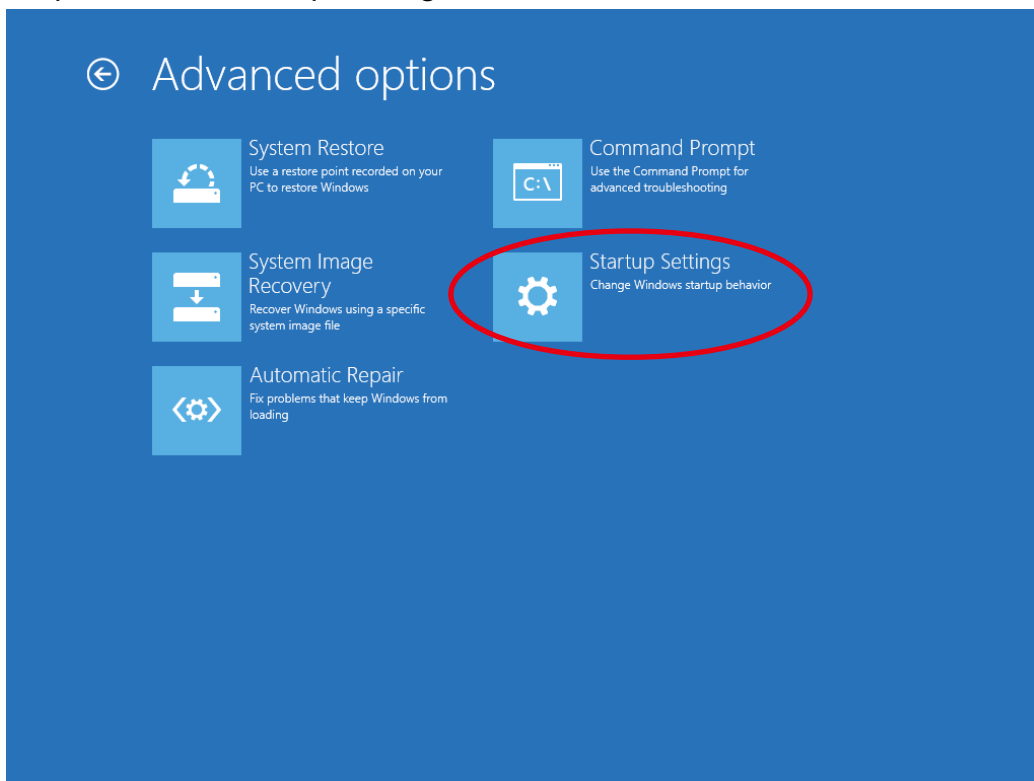
Step 2: Select "Troubleshoot".



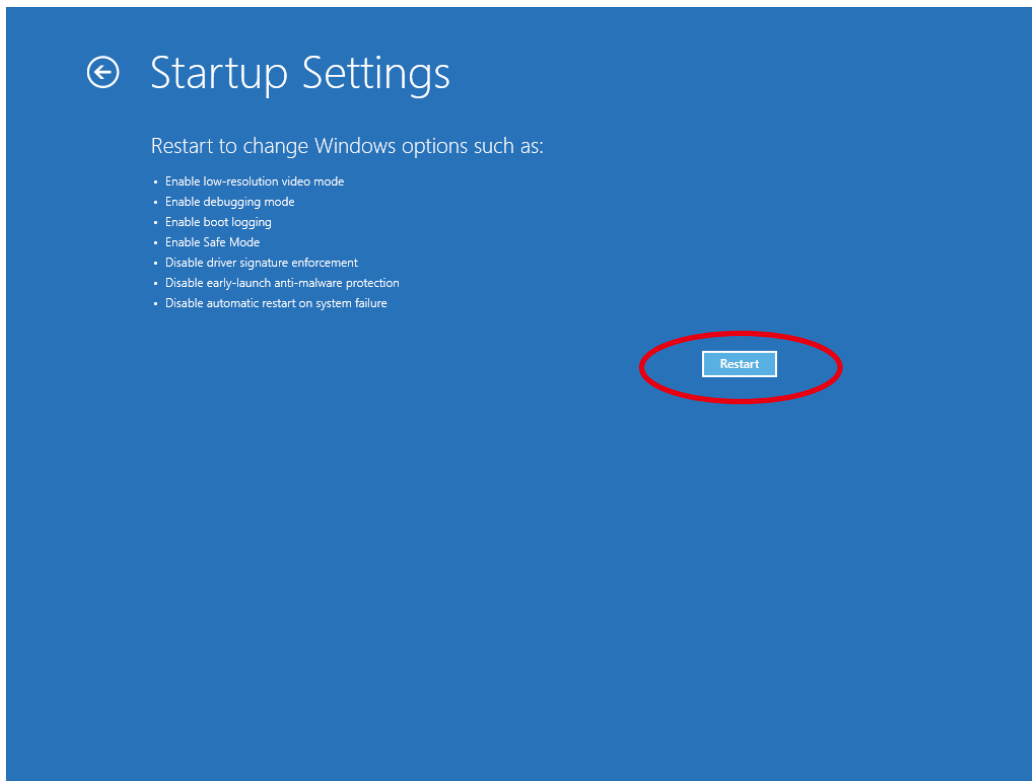
Step 3: Select "Advanced options".



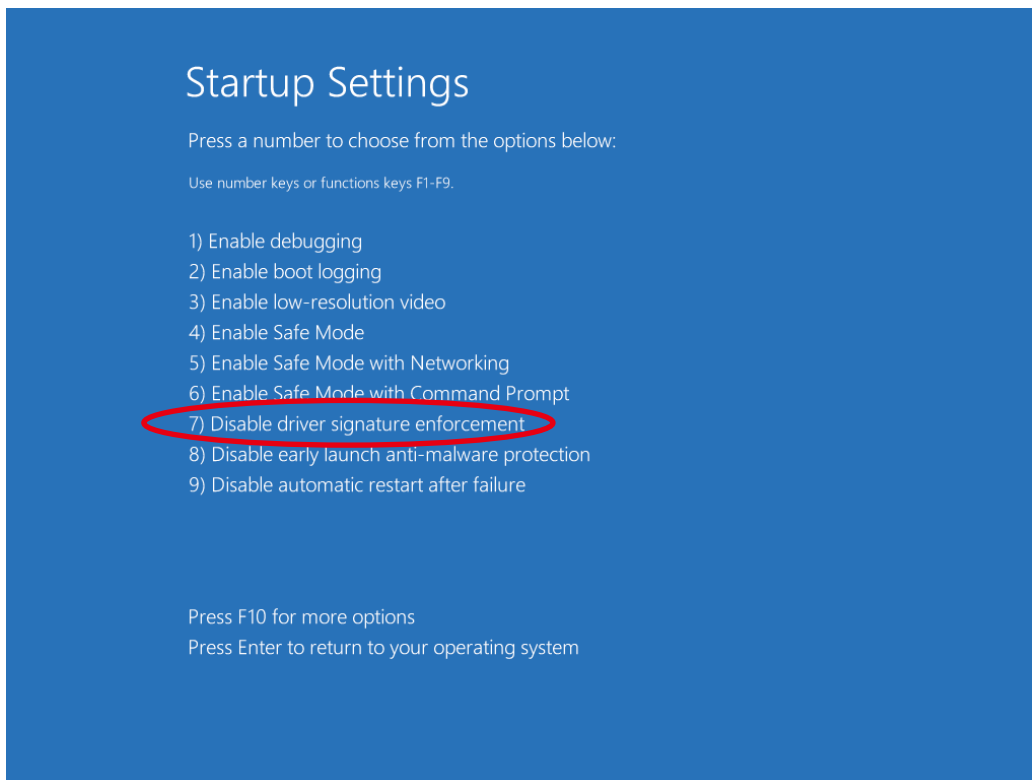
Step 4: Select "Startup Settings".



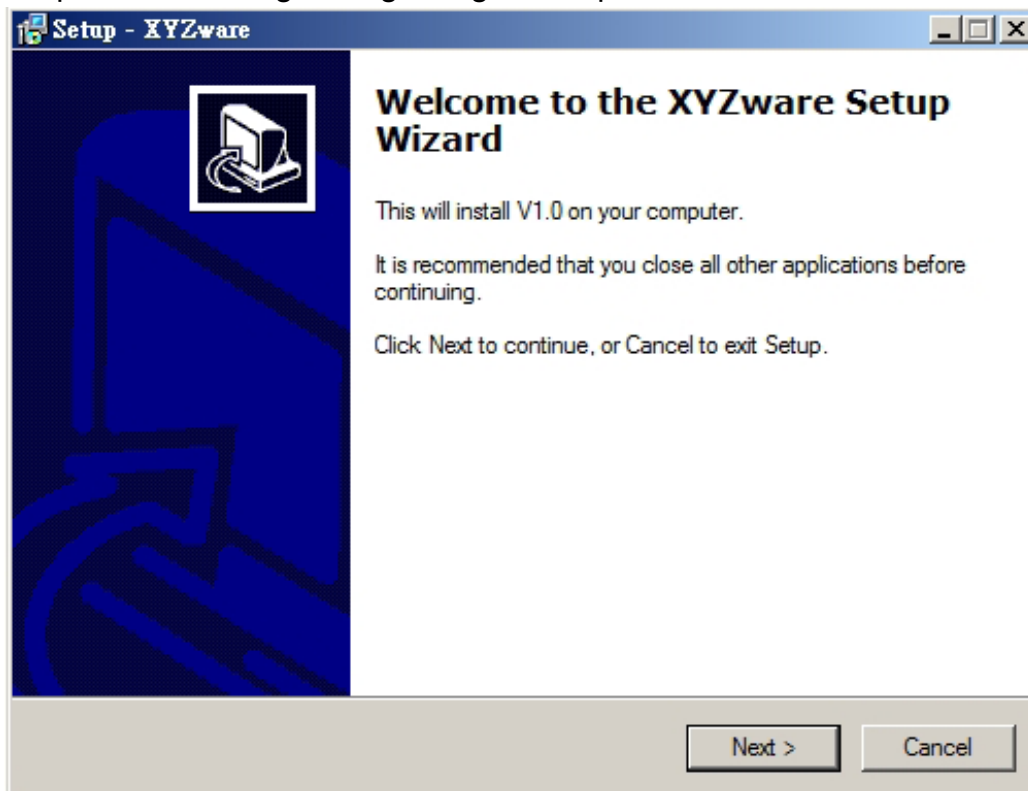
Step 5: Select "Restart".



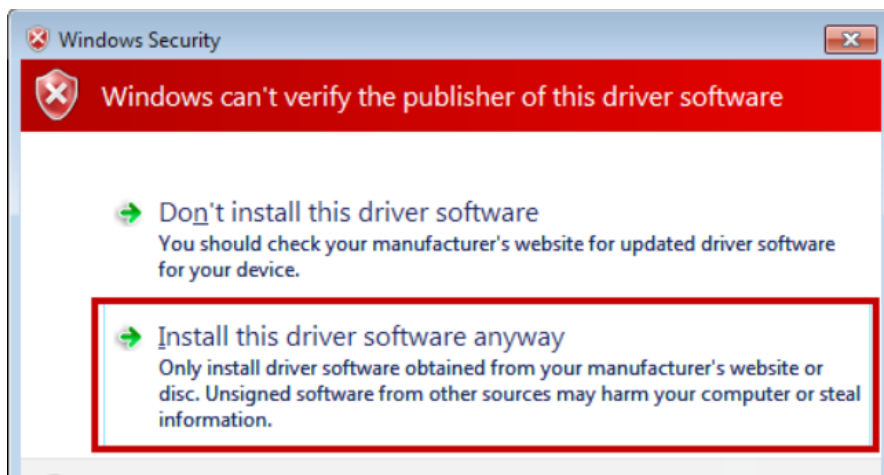
Step 6: After restart, press the Number Key7 or F7  
"Disable driver signature enforcement"



Step 7: After closing the digital signature, please reinstall the XYZware.



Step 8: Select "Install this driver software anyway".



Step 9: Setup is complete. Get started.

